

PRESENTER:
Raveena Garcha



Authors: Aayza Asim, Jennifer Begg, Karyn Epp, Leeann Taylor, Mahmoud Mitha, Mark Chilvers

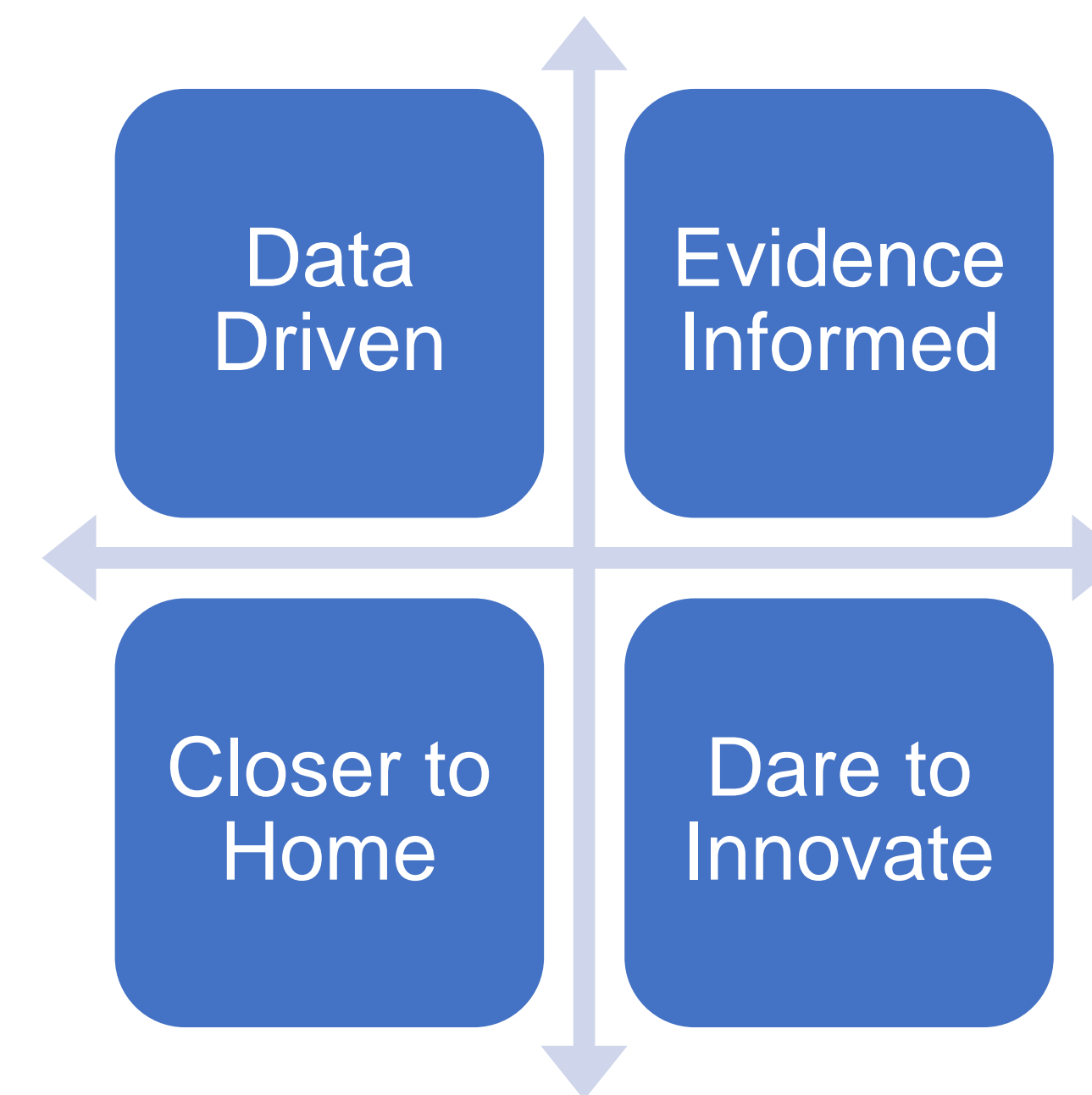
Background

To improve the coordination of care and better integrate the needs of our patients and families, BC Children's Hospital (BCCH) will transition the management of the Child Health BC (CHBC) outreach services program into its operations. There are 14 subspecialty clinics spanning over 20 sites in BC and the Yukon. In partnership with Regional Health Authorities (RHAs), the subspecialty clinics offer a coordinated provincial outreach service for assessment and/or treatment in the patient's home community.

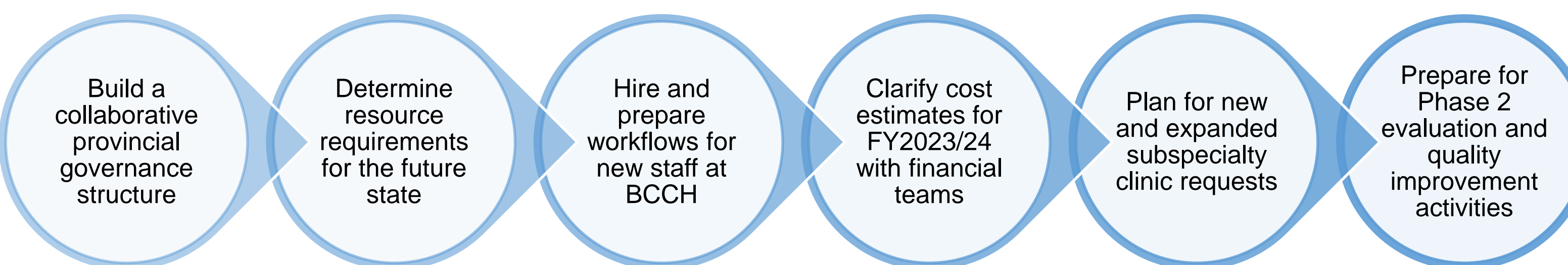
Through this service, children and their families are able to access subspecialty care from BCCH, the only Tier 6 Specialty Pediatric Centre in the province, without making a trip to Vancouver.

Description

To improve service delivery and enhance patient quality and access to care, BCCH will take over the operational responsibilities of the program currently held by CHBC (Phase 1) – in turn, CHBC will inform system planning through data analysis and evaluation (Phase 2).



Methods



Co-Facilitate the Annual Planning process in collaboration with CHBC & RHAs

Provincial Partners



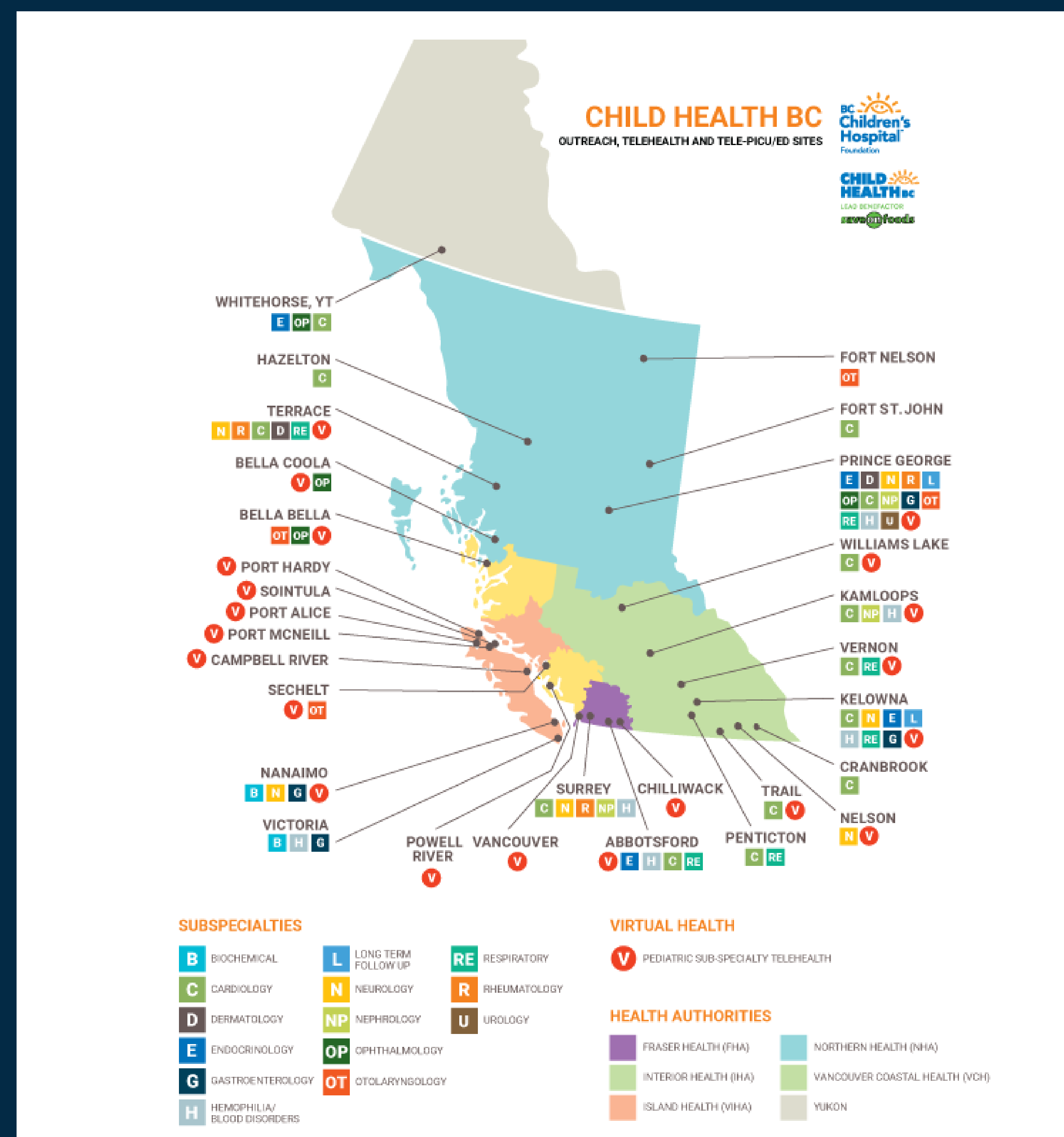
Pediatric Subspecialty Outreach Services

A collaborative approach to providing seamless care for children with complex healthcare needs in BC



Photographed is a patient with complex heart defect that received specialized care by the cardiology outreach team in 2019.

BC Children's Hospital Foundation. (2021). *Helping Kids Where They Live: Child Health BC's Regional Subspecialty Outreach Clinics*. Presented to Scotiabank.

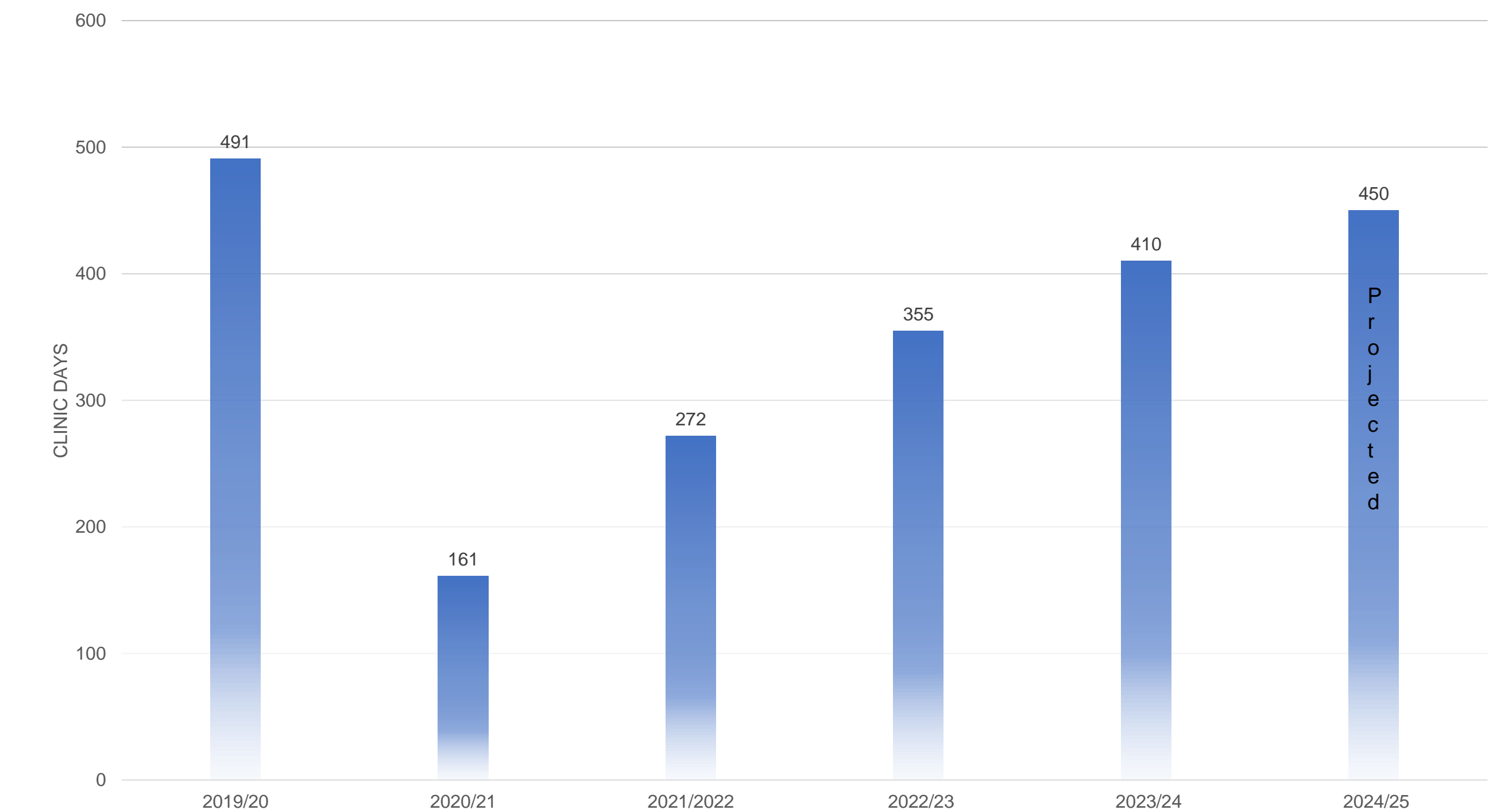


Significance

The transition provides an opportunity to:

- Develop an equitable, streamlined subspecialty outreach service model
- Allow for programs to pool resources, follow standardized operating procedures and allow province wide evaluations
- Efficiencies in service delivery through education and training
- Improved understanding of how limited resources are distributed
- Improved patient and family/caregiver outcomes
- Increased outreach services in rural and remote areas
- Collaborate with Indigenous partners to improve service delivery in Indigenous communities

PEDIATRIC SUBSPECIALTY CLINICS 2019-2025



Next Steps

Working collaboratively with each RHA, BCCH and CHBC would continue to meet regularly with RHA pediatric operational and medical leads to establish outreach plans for the year from all BCCH subspecialties. To properly guide and inform the process an advisory committee, consisting of BCCH and CHBC program leaders, physician leaders, and Indigenous health leaders, will provide program input and strategic direction over the course of the transition.

⊞ Gather data to make decisions for more equitable services, especially underserved communities

📈 Use data to support decisions about where to add new clinical programs

🔗 Assess the current referral pathways and facilitate planning discussions

📋 Support provincial outreach program evaluation

💡 Inspire innovation



Visit the [CHBC website](#) for more information.