

PRESENTER:
Yaghoub, Yasaman



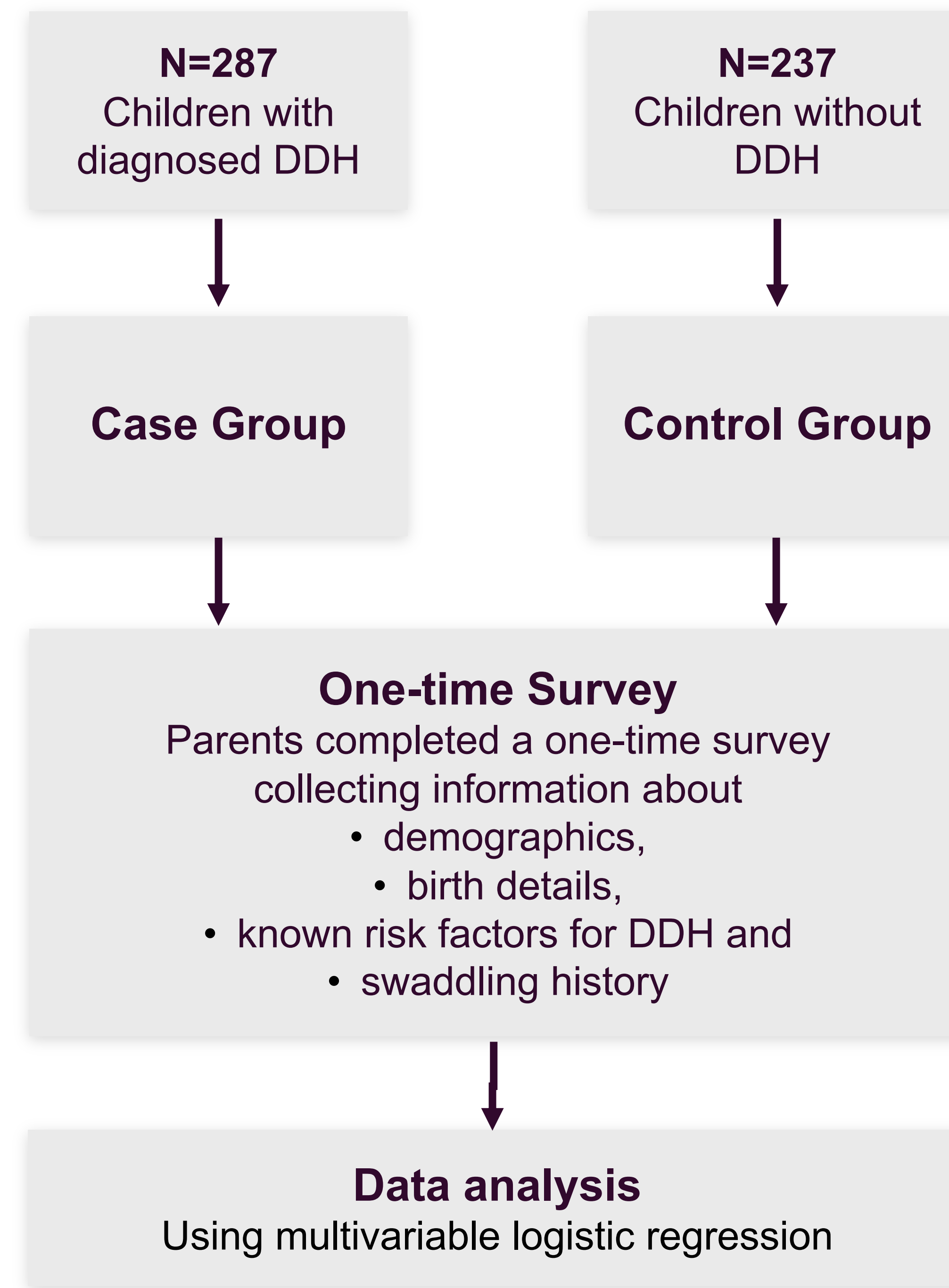
BACKGROUND:

• While a link between swaddling and hip dysplasia (DDH) has been suggested for several decades, there have been few epidemiological studies specifically investigating this relationship.

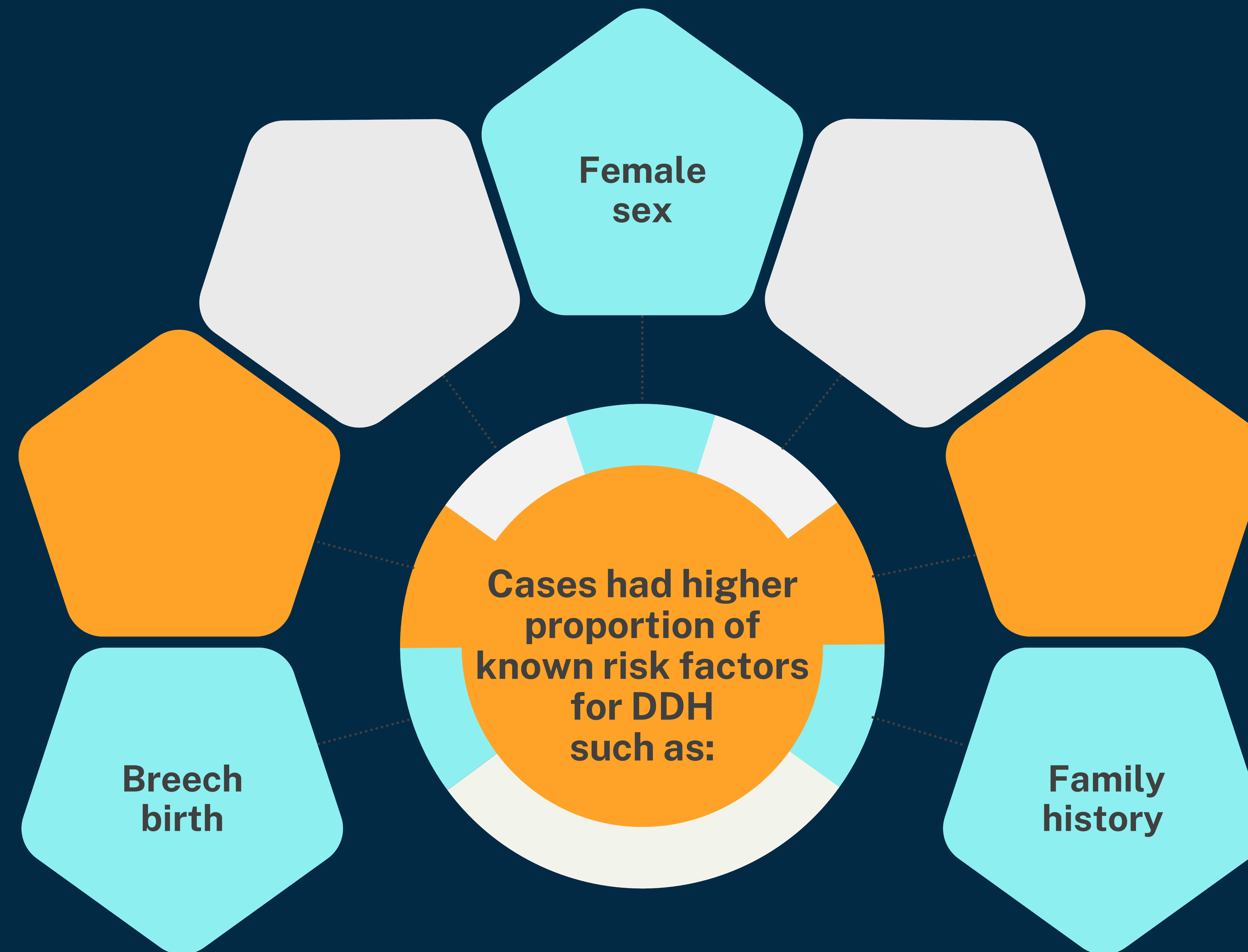
• The aim of this study was to assess whether a relationship exists between swaddling and DDH through a case-control study design.



METHODS:



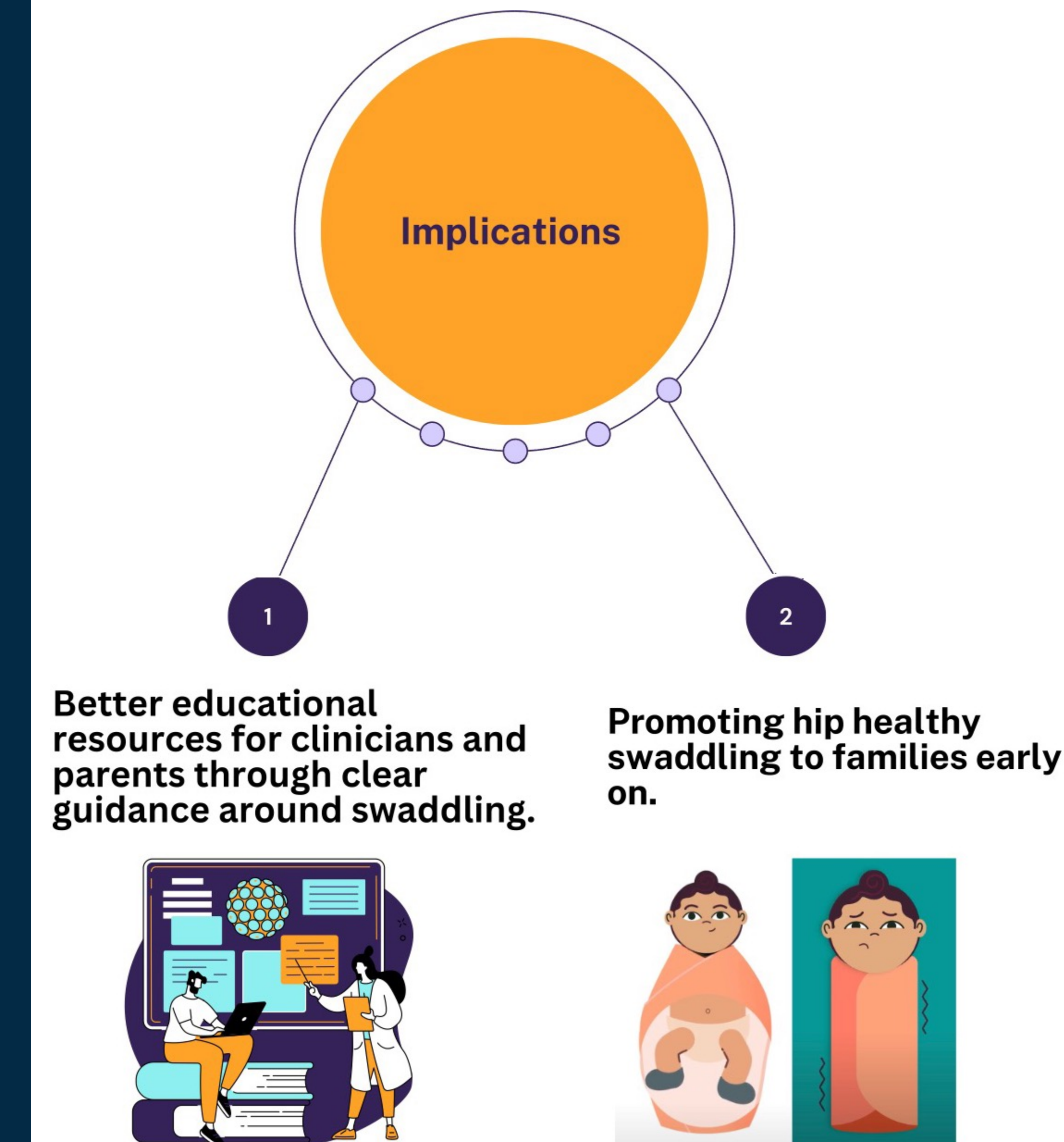
A case-control study to evaluate the role of swaddling in developmental dysplasia of the hip



The results of this study suggest that swaddling event duration may be more important in the development of DDH than simply whether swaddling occurred



IMPLICATIONS:



AUTHORS:
Bryn O Zomar
Emily K Schaeffer
Ashleen Khatra
Yasaman Yaghoub
Sharon Ho
Vuong Nguyen
Kishore Mulpuri
Anya F. Smith

